

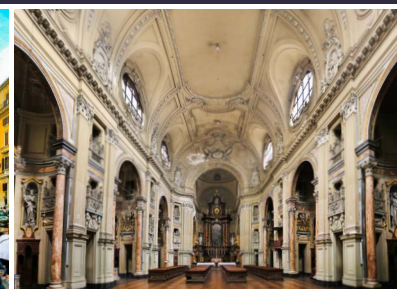


www.eocatholic.com/mytrip Tour = IT23 Code = C



# A Pilgrimage to Italy & the Vatican

March 7, 2023 • August 1, 2023 • November 1, 2023



**Celebrate Mass Daily  
when a Priest Travels**



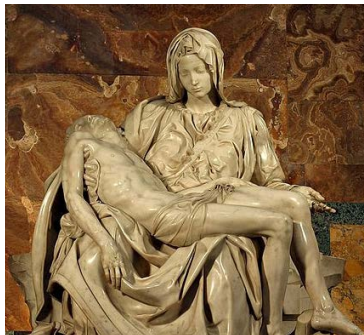
www.EO.travel • 800-247-0017

Scan to  
Travel with Us!





# ITINERARY



## Day 1 – Depart the USA

Your Italian adventure begins as you depart on your international flight.

## Day 2 – Arrive in Milan & Turin

Your guide will greet you and escort you to your motorcoach for your drive through the countryside to Turin (Torino) for dinner and overnight. (D)

## Day 3 – Turin & Pisa

Enjoy a tour of Turin today, including a stop at the Palatine Gate from Roman Times. You walk through the cathedral where the Shroud of Turin is kept in the Chapel of the Holy Shroud. You will spend time in the Piazza Castello and see such buildings as the Savoy Royal House while walking there. This afternoon, you will drive to Pisa for overnight. Dinner on own in the city. (B)

## Day 4 – Pisa & Florence

This morning, you can take your photo in front of the famous Leaning Tower. This 180-foot round tower is over 10 degrees out of perpendicular. The tower began to lean during its construction in 1173 and corrective efforts failed. You will visit the Duomo next door, before heading to Florence. After lunch, you'll see the Piazza della Signoria with its Neptune Fountain and Vecchio Palace. Also, see, the Santa Maria del Fiore Cathedral, which houses Michelangelo's unfinished Pietà, the Baptistery, which features Ghiberti's famous Gates of Paradise and the Academy, where you can view some of Michelangelo's finished and unfinished work, including the awe-inspiring David. Check into your hotel in Assisi for a later dinner and overnight. (B, D)

## Day 5 – Assisi

This morning, you will wake up to the atmospheric sounds of chapel bells, cobblestone footsteps and a tangible spirit of St. Francis preserved within the walls of this holy town. In the morning, you will visit the lower city. The Basilica of St. Mary of the Angels stands at the foot of the hill of Assisi over the Porziuncola, Saint Francis' Church given him by the Benedictine monks. The Church and Convent of St. Damiano is where in 1205, Saint Francis received his calling to "Rebuild My Church". Saint Claire will later lead her Order of the Poor Ladies from here until her death in 1253. This afternoon, you will walk to the Papal Basilica of St Francis, the mother church of the Franciscan Order and burial place of St Francis. This basilica, which was begun in 1228, is built on the side of a hill and comprises an Upper and Lower church. These are decorated with numerous frescoes by late medieval painters including Giotto. Celebrate Mass here. Return to your hotel. Dinner is on your own this evening. (B)

## Day 6 – Greccio & Rome

After breakfast, you will begin your journey to Rome. In route, stop in Greccio to visit the Sanctuary. Set within the rock like an eagle's nest, the Greccio hermitage is an extraordinary fusion of architecture and nature. The Sanctuary is famous because Saint Francis of Assisi chose it as the backdrop to one of the highest and most lyrical moments in his life: the first recreation of the Bethlehem Nativity in Christianity on Christmas Eve, 1223. Upon your arrival to Rome, enjoy a visit to the Forum and the Colosseum, once the heart of ancient Rome and a place of martyrdom for the early saints. You will explore the romance of Rome as you stop at the famous Trevi Fountain. Legend says those who toss a coin into the fountain will one day return to Rome to toss another into the waters of Trevi. Check into your hotel for dinner and overnight. (B, D)

## Day 7 – Vatican

Enjoy a guided tour of the Vatican's Museums and Sistine Chapel. Built by connecting portions of the old Papal residence with newer structures, the museum houses a world-renowned collection of art and antiquities. Michelangelo painted the ceiling of the Sistine Chapel between 1508 and 1512, and later painted The Last Judgment between 1535 and 1541 for Popes Clement VII and Paul III. The primary function of the chapel is the Papal Conclave, providing the place where the College of Cardinals of the church gathers to elect a new pope. Then, walk through St. Peter's Basilica and celebrate Mass here. The present structure completed in 1590 was built over the Byzantine and Middle Ages structures that marked the tomb of Saint Peter. There are more than 100 tombs within the basilica, including most recently Saint John Paul II. Finish the day at the Pantheon, built by Marcus Agrippa during the reign of Augustus (27 BC to 14 AD). Emperor Hadrian rebuilt it around 126 AD. The building was given to Pope Boniface IV who converted it into a church - Saint Mary and the Martyrs (Santa Maria Rotunda). Mass continues to be celebrated here. (B)



## Itinerary continued...

### Day 8 – Rome

After breakfast, enjoy the opportunity to join in prayer with Pope Francis and receive his greeting, blessing and prayers. Begin your afternoon with a visit to the Archbasilica of Saint John Lateran. Six popes are entombed here. Next door is the Holy Staircase (Scala Santa), brought from Pilate's Palace in Jerusalem by Saint Helena in the 4th century. Climbing the stairs on your knees is a devotion that many pilgrims perform, and a plenary indulgence is granted for completing this feat. Next is the Basilica of Saint Lawrence Outside the Walls (San Lorenzo). Saint Lawrence was one of the first seven deacons of Rome, martyred in 258. The church is built next to catacombs that lead down to his grave. The relics of Saints Justin Martyr and Stephen are also enshrined here. Continue your pilgrim journey to the Basilica of Saint Mary Major (Maria Maggiore). This is the largest Marian church in Rome. Its construction began after the Council of Ephesus in 431 proclaimed that Mary was the Mother of God. Saint Jerome, translator of the Bible into the Latin Vulgate, is buried here. Celebrate Mass in one of the churches here. (B)

### Day 9 – Pilgrimage in Rome

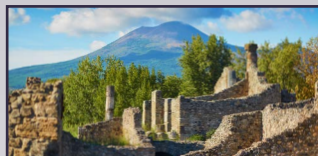
This morning begins your final day of pilgrimage at the Basilica of Saint Paul Outside the Walls. The present structure stands over the place where Constantine built the first church over Saint Paul's grave. The church features a portrait of every pope who has served the church, with the face of Pope Francis illuminated as the present pontiff. Step beneath the surface into the Catacombs of Callixtus, built along the Appian Way. Here, 16 popes from the 2nd through 4th centuries were interred, though they have been removed to various churches over the centuries. San Sebastian Outside the Walls is another of the seven Pilgrimage churches, and it's built over the Catacombs of Saint Sebastian. The remains of Peter and Paul were temporarily protected here during the Valerian Persecution of 258. Our seventh and final pilgrimage stop is the Basilica of the Holy Cross in Jerusalem. Saint Helena brought Passion relics here, and the floor was covered with soil from Jerusalem. Relics here include the index finger of Thomas that touched the wounds of Christ after His resurrection, and a piece of the Good Thief's Cross. Those who want to complete the seven-church pilgrimage as declared by Saint John Paul II in 2000 can continue to one more stop at the Shrine of Our Lady of Divine Love. Here, a pilgrim pursued by dogs appealed to Our Lady and she intervened for his safety. Pilgrims began to frequent the site and a chapel was built here in 1745. Celebrate Mass in one of the churches. (B, D)

### Day 10 - Return to the USA

Return home with memories of the people and places of Assisi and Rome or continue with an extension to the San Giovanni Rotundo.

*B = Breakfast, L = Lunch, D = Dinner*

# EXTENSION



## San Giovanni Rotundo & Pompeii

Starting at \$1,098\*

### Day 10 - Tivoli / San Giovanni Rotundo

Depart Rome and travel to Tivoli, the resort villas of Roman emperors and others who sought to escape the crowds of Rome. This afternoon, travel to San Giovanni Rotundo for dinner and overnight. (B, D)

### Day 11 - San Giovanni Rotondo – Padre Pio – Mount St. Angelo

Visit the Padre Pio Pilgrimage Church, erected in 2004, and walk the Way of the Cross on the forested hillside nearby. This afternoon, we will continue to Mount St. Angelo. The Sanctuary of Mount St. Angelo was built in the 13th century by Charles of Anjou. The archangel Michael has appeared here in 490, 492, and 1656, consecrating the shrine and sacred cave. You'll have time for reflection and prayer before returning to your hotel for overnight. Dinner is on your own this evening. (B)

### Day 12 - San Giovanni Rotundo / Sorrento

This morning, you will attend Mass at one of the churches here. After lunch, travel to Sorrento for dinner and overnight. (B, D)

### Day 13 - Pompeii / Rome

You will visit the spectacular ruins in Pompeii, which were covered by the eruption of Mount Vesuvius in 79 AD. The city remained buried and undiscovered for almost 1500 years until excavation began in 1748. These excavations continue today and provide insight into life during the Roman Empire. Continue to Rome for overnight. Dinner is on your own this evening. (B)

### Day 14 - Return to the USA

Transfer to the airport for your return to the USA.

Guests taking an extension may be on a different flight than their group and/or traveling companion.

\*A 3.5% surcharge will be added to all credit card transactions.



STARTING AT

**\$3,598\***

## Select Your Departure Date

All-inclusive prices based out of New York

March 7, 2023 ..... \$3,598\*

August 1, 2023..... \$4,298\*

November 1, 2023 ..... \$3,998\*

## YOUR ALL-INCLUSIVE PRICE INCLUDES:

**Basic Tour & Guided Sightseeing**  
**Round-trip International Airfare from New York**  
 Additional baggage & optional fees may apply; see fine print for details

**Fuel Surcharges and Government Taxes**  
 Subject to change

**Admin. Fees, Entrance Fees, Hotel Gratuities & Program Fees**  
**Meals as listed in the itinerary, Deluxe Motorcoaches**  
**First-Class Hotels & much more!**

\*A 3.5% surcharge will be added to all credit card transactions.

## Purchase Domestic Airfare through EO

*Includes Fuel Surcharges, Transfers and Taxes (subject to change)*

**To fly from a city near you, call 1-800-247-0017, X590**  
**or register online at [www.eocatholic.com](http://www.eocatholic.com)**

## Register Early & Save

**\$150**

11 Months Prior to Departure

**\$125**

10 Months Prior to Departure

**\$100**

9 Months Prior to Departure

**\$75**

8 Months Prior to Departure

**\$50**

7 Months Prior to Departure

**\$25**

6 Months Prior to Departure



[www.eocatholic.com/mytrip](http://www.eocatholic.com/mytrip) Tour = IT23 Code = C

v.002 06/15/22

### Travel Protection Plan - Premium Rates

For a full description of the plan, go to: [www.tripmate.com/wpF427E](http://www.tripmate.com/wpF427E)

Trip Cost	Plan Cost	Trip Cost	Plan Cost	Trip Cost	Plan Cost	Trip Cost	Plan Cost
\$ 0 to \$1000 .....	\$ 99	\$2501 to \$3000 .....	\$299	\$4501 to \$5000 .....	\$499	\$6501 to \$7000 .....	\$699
\$1001 to \$1500 .....	\$149	\$3001 to \$3500 .....	\$349	\$5001 to \$5500 .....	\$549	\$7001 to \$8000 .....	\$799
\$1501 to \$2000 .....	\$199	\$3501 to \$4000 .....	\$399	\$5501 to \$6000 .....	\$599	\$8001 to \$9000 .....	\$899
\$2001 to \$2500 .....	\$249	\$4001 to \$4500 .....	\$449	\$6001 to \$6500 .....	\$649	\$9001 to \$10,000 .....	\$999

#### Schedule of Coverages

#### Maximum Benefit

<b>Part A *</b>	
Trip Cancellation .....	Trip Cost
<b>Part B</b>	
Trip Interruption .....	Trip Cost
Missed Connection .....	\$500
Travel Delay (Up to 10 days & up to \$200 Per Day) .....	\$2,000
<b>Medical Expense / Emergency Evacuation</b>	
Accident and Sickness Medical Expense .....	\$25,000
Emergency Evacuation and Repatriation .....	\$50,000
Accidental Death & Dismemberment .....	\$25,000
Baggage and Personal Effects .....	\$1,000
Baggage Delay .....	\$200

**Part A** - Travel Arrangement Benefits are provided by Educational Opportunities Tours. **Part B** - Travel Protection Benefits are provided by United States Fire Insurance Co. For New York Residents Only: Part A Benefits are travel arrangement benefits underwritten by United States Insurance Company.

### Conditions and Limitations

This is a brief description of the plan available for all Travel Protection sales for Trips departing January 1, 2013 and after. Certain exclusions and limitations apply and are detailed in the Certificate of Coverage. For example, coverage does not apply to: any Sickness or condition of you, a Traveling Companion or a Family Member traveling with you that existed during the 60 days prior to the effective date of the coverages (The Pre-Existing Condition Exclusion is waived if payment for this plan is received by Educational Opportunities Tours, Inc. at or before the final payment due date for Your Trip or 105 days before departure date, whichever occurs first.), suicide, normal pregnancy, war or any act of war. Other Covered Reasons, as defined, includes the following events and their consequences: Cancellation or Interruption of your Trip due to: Inclement Weather, unannounced Strike, mechanical breakdown that causes complete cessation of services of Your Common Carrier for at least 12 consecutive hours; a documented traffic accident while en route to departure; being hijacked or quarantined; jury duty; destruction of your home or destination by fire, flood, burglary or natural disaster; being called to the emergency service of government to provide aid or relief in the event of a natural disaster; a documented theft of passports or visas; a transfer of employment of 250 miles or more; or Revocation of military leave. For further information ask for the Certificate of Coverage which fully details the coverages, provisions, limitations and exclusions of the plan offered and is available to you, upon request, at any time prior to your purchase of the plan. This plan is underwritten by: United States Fire Insurance Company, Eatontown, NJ. Benefits are administered by: Trip Mate, Inc., 9225 Ward Parkway, Suite 200, Kansas City, MO, 64114, 1-800-888-7292 (\*in CA, dba Trip Mate Insurance Agency).

### PROGRAM CONDITIONS

#### INCLUDED IN PRICE:

• Round-trip international airfare • Deluxe motorcoaches • 1st class hotels • Guided sightseeing • Entrance fees to sites visited (as listed in itinerary) • Meals as listed on itinerary • Hotel gratuities • Program fees • Administrative Fee • Fuel surcharges \$500 • Government Taxes \$98 (Increases in government tax and fees are subject to change)

#### NOT INCLUDED IN PRICE:

• Optional Travel Protection Program (see premium schedule)  
 • Optional sightseeing as listed in the brochure  
 • Miscellaneous fees such as individual transfers; passports, laundry, most dinners, beverages at meals & baggage fees  
 • Voluntary "Love Offering" for guide and driver • \$100 Document fee for Non-US/Canadian residents • Visa for non-US citizens

#### ACCOMMODATIONS:

Price is per person based on double occupancy. When available, single rooms are often smaller than doubles. While EOT will try to match roommates, EOT cannot guarantee a roommate will be available. Roommates may be assigned as late as 30 days prior to departure and, if one is not available or you request a single room, the following charges apply: \$498 during the basic tour. **\$298 for San Giovanni Extension**

#### SAVINGS:

Early registration discounts or other promotions are deducted from the balance of your bill. Hosts/Co-hosts are not eligible.

#### PAYMENT INFORMATION:

A 3.5% surcharge will be added to all credit card transactions.

#### PAYMENT SCHEDULE:

Payment Amount	Payment Due Dates & Notes
<b>\$100*</b>	Registrations received more than 10 months prior to departure *Additional \$500 deposit will be due 6 months prior to departure
<b>\$300**</b>	Registrations received 6-10 months prior to departure. **Additional \$300 deposit due 6 months prior to departure.
<b>\$600</b>	Registrations received between 6 months to 106 days prior to departure.
<b>\$1200</b>	2nd Deposit Amount. All guests must have \$1,800 on their account 105 days prior to departure to be ticketed
<b>\$1800</b>	Registrations received between 105-76 days prior to departure must pay the full deposit amount and may be subject to late registration fees.
<b>Full Payment</b>	Final Payment is due for all guests 75 days prior to departure. If paid after the due date, a late payment fee of \$100 will be assessed.
<b>Travel Protection Amount</b>	The Travel Protection Plan premium will be due no later than 105 days prior to departure to be in full effect. Travel protection premiums must be paid in addition to our deposits and in advance of the final payment for coverage to be in effect.

#### REGISTRATIONS RECEIVED less than 105 days prior to departure:

We welcome registrations after 105 days prior to departure. Registrations received between 104-90 days prior will incur a \$100 per person fee. Registrations received between 89-75 days prior will incur a \$200 per person fee. Registrations received between 74-60 days prior will incur a \$400 per person fee. Registrations received 59 days prior to departure or later will incur an additional fee based on air availability. Additional fees will be advised upon registration.

#### CANCELLATION AND CANCELLATION FEES:

100% of Cancellation Fees are covered by the optional Travel Protection Program provided premium has been paid and reason for cancellation is coverable. Those who do not take travel protection should be aware of the following per-person cancellation penalties: From day of registration to 105 days prior to departure, you will be charged the \$100 non-refundable cancellation fee plus any airline fees. Additionally, thereafter, you will be charged any airline penalties and a single room supplement if your cancellation forces your roommate into a single plus the following per-person charges: 104-80 days = \$400; 59-45 days = \$600; 44-31 days = 40% of total cost; 30 days to day of departure = 100% of total cost. Submit cancellation in writing. On or after day of departure, there will be no refund for any services not used.

#### STATEMENTS OF RESPONSIBILITY

EOT does not accept responsibility for losses or additional expenses due to delay or changes in air schedules, hotel overbookings, other hotel related problems or causes, and/or travel supplier cancellations or postponements. Travel suppliers include all tour operators, cruise lines, airlines, hotels, bus companies, entertainment venues, and any other travel supplier used to operate the tour. All such losses or expenses will be the responsibility of the passenger. EOT reserves the right to make adjustments to the itinerary as deemed desirable by EOT, and EOT reserves the right to cancel any tour prior to departure. If a tour is canceled beyond the control of EOT, EOT will provide a refund or a future travel credit to be used two years from the date of issuance for the value of all funds paid by the passenger less nonrefundable travel supplier prepaid deposits, travel supplier change fees, nonrefundable travel protection premiums, and a \$150 administration fee.

#### ABILITY TO TRAVEL STATEMENT:

Passengers registering for the tour accept the responsibility for being in good health and able to walk and travel on the tour. Because many of the sites are not accessible to the physically challenged, those needing oxygen, wheelchairs, or other ambulatory assistance will find the tour extremely limiting to their experiences. If you have questions, please contact Educational Opportunities Tours Inc. for more details. EOT reserves the right to refuse or revoke travel to anyone who is, in the sole judgment of EOT, incapable of group travel without causing undue demands upon the staff or other tour participants. Accessible rooms/cabins are limited and subject to confirmation after receiving the passenger's written request.

#### PASSPORT INFORMATION:

Passport information must be submitted to our office no later than 105 days prior to your trip. Failure to provide your passport information to our office by this date may result in change fees or denial of travel. 105 days prior to your trip you will be contacted to re-confirm your itinerary, travel arrangements and registration information during the preliminary check in process for your trip. Discrepancies in information or failure to check in for your tour may result in change fees, delays in receiving travel documents for your trip, or denial of travel.

#### PRICE INCREASES:

All prices quoted in this brochure are subject to change prior to payment in full due to currency fluctuations, fuel surcharge increases, government taxes and fees increases or unforeseen circumstances. In addition, you may be subject to a price increase after payment in full has been received due to potential government imposed taxes and fees.

#### AIRLINE ROUTES AND TICKETS:

In order to keep prices low, EOT does not guarantee the most direct routing to your final destination. Once issued, airline tickets cannot be changed or refunded thereafter. Air transportation to/from your destination will be economy class on IATA and ARC carriers utilizing APEX or SUPER APEX non-refundable, non-amendable tickets for groups of 10 or more flying together on entire itinerary. If you choose to depart from a different city than your group or traveling companion, or deviate your flight and/or trip plans, and/or you are taking a pre or post tour, you may fly on a different scheduled flight(s) than the rest of your group. If you make your own air arrangements, you are responsible for booking all needed flights for your travel unless specified otherwise. Contact guest services for further details.

#### FLIGHT TIMES AND SEATING:

All flights are subject to change by the airlines without advance notice. EOT is not responsible for such changes or delays and does not reimburse expenses resulting from such delays. If you are making your own flight arrangements to the departure city, we recommend you purchase a ticket that can be exchanged without large penalties. There is no advance seat selection for groups on most airlines. Early check-in is necessary to secure seats with travel companions and those with special needs. Due to security measures taken at airports, it is advisable to arrive at the airport three hours prior to departure time. Seating is solely under the control of the airlines.

#### ADDITIONAL AIRLINE FEES:

You will likely incur additional airline checked baggage fees that are not included in the price of the tour. These fees vary by airline and are at the subject of adjustment without notice in the event of any change or currency fluctuation. (food, excess baggage, overweight baggage, items of personal nature, etc.) as well. For more information, visit [www.eo.travel/travelinfo/airlinefees.aspx](http://www.eo.travel/travelinfo/airlinefees.aspx).

#### ON OWN DEVIATIONS:

On Own Deviations from the standard tour program must be submitted in writing and are subject to additional airline fees, if applicable. Transfers for passengers who deviate are not included.

#### ITINERARY CHANGES:

Every effort has been made to ensure the accuracy of this brochure. While EOT will make every effort to ensure you will see all sites listed in this brochure, the availability of sites, order of sites and/or days and number of days may be altered to accommodate changes in airline, hotel schedules, and local conditions. No changes to the itinerary are effective unless approved in writing and signed by an authorized officer of the tour operator. Except as stated herein, no other person is authorized to cancel, modify or vary the tour arrangements or to make any representation of warranty concerning the tour.

Due to airline schedules, some participants may receive one or two extra leisure days at a nominal per day charge and some extensions may not be available on all departure dates. If itinerary changes necessitate extra overnights, you will be charged \$125 per night; single rooms \$175 per night. Meals for extra nights are not included.

#### VALIDITY DATE:

This brochure is valid until 08/15/22. If validity date has passed, current brochures may be found at [www.eocatholic.com](http://www.eocatholic.com). Registrations will still be accepted after the validity date.

#### RELEASE INFORMATION:

Payment of deposit indicates permission for EOT or its agents to record the registrant's participation and appearance on video tape, audio tape, film, photograph, or any other medium and to use the registrant's name, likeness, voice, comments, submitted documentation, written papers, and/or biographical material without restrictions or limitation for any advertising, marketing, publicity, educational or promotional purpose which EOT or its agents deem appropriate, unless the registrant or guardian otherwise notifies EOT in writing prior to departure.

Enrollment in, payment of deposit and/or acceptance of final documents, vouchers, or tickets shall be deemed to be consent to the Passenger Agreement and Program Conditions of the brochure. Prices are based on tariffs in effect as of January 1 of the previous year and are subject to adjustment without notice in the event of any change or currency fluctuation. Except where otherwise stated, EOT acts only as agent for the relevant supplier in securing hotels, transportation and other travel services and in no event shall EOT be liable for failure by any such supplier to render any transportation, lodging or other travel service to be provided on the tour. The passenger agrees that EOT assumes no liability for injury, death, damage, loss, theft, accident, delay, any lost or damaged luggage, or irregularity which may occur by reason of any negligent or willful act or omission of any suppliers of service.

EOT does not own or operate any of the suppliers of services to your tour. Similarly without limiting the foregoing, passenger agrees to hold EOT harmless for any defect in any vehicle, plane, boat, bus, car, van or other vehicle, act of war or insurrection, terrorist activity, revolt or other civil uprising, military action, strikes or labor unrest or any Act of God or for any other act of any third party. Florida law will be applicable to any dispute which arises out of or concerns this brochure or your tour. Any and all litigation must be brought only in and for courts in Polk County, Florida to the exclusion of litigation anywhere else in the world. Educational Opportunities Tours is the tour operator and is solely responsible for the travel program. Educational Opportunities Tours is registered with the State of Florida as a Seller of Travel. Registration No. ST24130. CST2027682-40.