



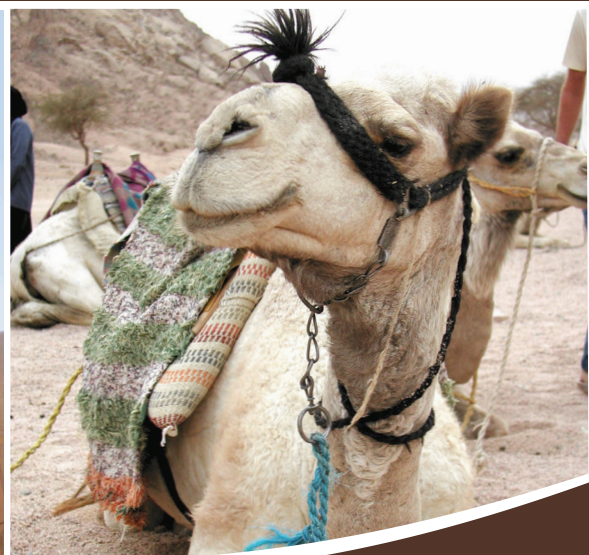
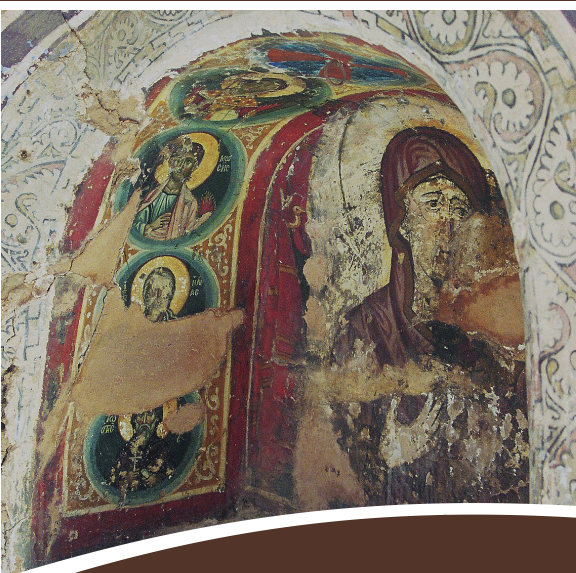
[www.EO.travel/mytrip](http://www.EO.travel/mytrip) Tour = EG23 Code = S



# Splendors of Egypt

*In the Footsteps of Moses, Joseph & the Holy Family*

February 14, 2023 • October 31, 2023



**EO**   
Educational Opportunities Tours

**50<sup>TH</sup>**  
ANNIVERSARY  
EST. 1973

[www.EO.travel](http://www.EO.travel)  
800-247-0017

Scan to  
Travel with Us!





# ITINERARY



## **Day 1 – Depart the USA**

Depart the USA on an overnight flight.

## **Day 2 – Arrive in Cairo**

You will be welcomed at the Cairo airport by our representative and transferred to your hotel to enjoy dinner before retiring for the night.

## **Day 3 – Cairo**

After breakfast, head to the Museum of Egyptian Antiquities, known commonly as the Egyptian Museum and home to over 120,000 ancient Egyptian antiquities with a representative amount available on display. Later, visit the Pyramids of Giza, one of the only existing Wonders of the Ancient World, and the nearby Great Sphinx of Giza, the largest and most well-known Sphinx.

## **Day 4 – Fly to Aswan – Cruise Embarkation**

Following breakfast, board your flight destined for Aswan. Embark on your Nile Cruise prior to lunch. This afternoon, tour the Aswan High Dam, the pride of modern Egypt. Visit the Aga Khan Mausoleum and the Granite Quarries to see the Unfinished Obelisk, and finally to the Temples of Philae, where you will visit the Great Temples of Isis and Hathor.

## **Day 5 – Kom Ombo**

Today, sail to Kom Ombo to visit the only temple dedicated to two contrasting gods: Sobek, the crocodile-headed god of the underworld, and Haroeris, the winged god of the sky. Return to the ship and cruise to Edfu.

## **Day 6 – Temple of Horus and Luxor**

This morning, you will visit one of the best-preserved temples of Egypt located at Edfu. This temple was dedicated to the god Horus, the principal of resurrection. He is depicted in his role



### *Itinerary continued...*

as avenger of his father, Osiris, who was murdered by his brother, Seth. Continue sailing to Esna and cross the Nile Locks on your way to Luxor. Visit the magnificent Temple of Luxor with its avenue of sphinx statues and mighty monumental columns. Continue to the Karnak Temple, which took over 2,000 years to build and is the largest religious building ever constructed. See the famed Hypostyle Hall, the Obelisks of Queen Hatshepsut and Thutmose III, the temple of Amon, the Granite Scarabeus and the Sacred Lake.

#### **Day 7 – Disembarkation – Valley of the Kings and Queens**

In Luxor, visit the vast burial city called the Necropolis of Thebes, located on the West Bank of the Nile. Your visit will take you to the Colossi of Memnon, the Temple of Queen Hatshepsut at Deir El Bahari, the Valley of the Kings, and the nearby Valley of the Queens. This afternoon, board your flight en route to Sharm el Sheikh.

#### **Day 8 – Sharm el Sheikh**

Today is yours to relax and explore Sharm el Sheikh on your own.

#### **Day 9 – St. Catherine's**

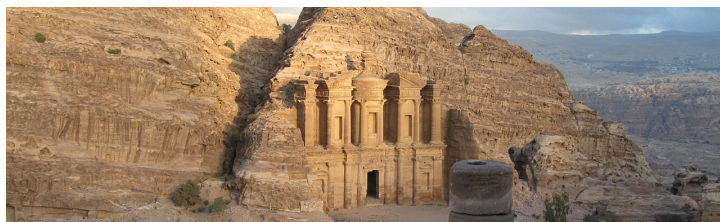
Travel to Mount Sinai and St. Catherine's Monastery, built in the 6th century to protect what was believed to be the "Burning Bush." Enjoy a short hike of Mount Sinai and later enjoy a traditional Bedouin dinner.

#### **Day 10 – Exodus Route to Cairo**

Travel to Cairo via the route of the Exodus. Overnight in Cairo and prepare for your flights home.

#### **Day 11 – Return to the USA or enjoy an Extension**

## EXTENSION



### **Wonders of Petra & the Dead Sea**

February 24-27, 2023 • November 10-13, 2023

**Starting at \$1,198\***

#### **Day 11 – Fly to Amman**

Fly to Amman in the morning. Enjoy a tour of the city, then transfer to your Dead Sea hotel.

#### **Day 12 – Petra**

Begin your journey south towards Petra today. Explore the city of Petra. Its entrance passes through a long, narrow gorge known as the Siq and can only be accessed by carriage, horseback or on foot. Once inside the city, marvel at the intricate detail of a city that was cut into the cliffsides of rose-colored rock. Travel to your hotel at the Dead Sea for dinner and overnight.

#### **Day 13 – Madaba & Mount Nebo**

Travel to Madaba, the City of Mosaics, to visit the Church of Saint George with its sixth-century, Byzantine, mosaic map showing Jerusalem and other holy sites. Continue to Mount Nebo, where Moses caught a glimpse of the Promised Land (Deut. 34). On a clear day, you can see all the way across the Jordan Valley and the Dead Sea to the rooftops of Jerusalem and Bethlehem. Return to Amman and prepare for your overnight flight.

#### **Day 14 – Return to the USA**

Guests taking an extension may be on a different flight than their group and/or traveling companion.

A minimum of 8 travelers are necessary to operate the extension.

\*A 3.5% surcharge will be added to all credit card transactions.





Starting at  
\$3,998\*

## Select Your Departure Date

All-inclusive prices based out of New York

February 14 ..... \$3,998\*

October 31 ..... \$3,998\*

### YOUR ALL-INCLUSIVE PRICE INCLUDES:

Basic Tour & Guided Sightseeing  
Round-trip International Airfare

Additional baggage & optional fees may apply;  
see fine print for details

Fuel Surcharges and Government Taxes

Subject to change

Admin. Fees, Entrance Fees, Hotel Gratuities,  
Program Fees, Daily Breakfast & Dinner,  
Deluxe Motorcoaches, First-Class Hotels & much more!

\*A 3.5% surcharge will be added to all credit card transactions.

## Register Early & Save

**\$150**

11 Months Prior to Departure

**\$125**

10 Months Prior to Departure

**\$100**

9 Months Prior to Departure

**\$75**

8 Months Prior to Departure

**\$50**

7 Months Prior to Departure

**\$25**

6 Months Prior to Departure

Full deposit required. Savings deducted from balance.

## Purchase Domestic Airfare through EO

Includes Fuel Surcharges, Transfers and Taxes (subject to change)

To fly from a city near you, call 1-800-247-0017, X590  
or register online at [www.eo.travel](http://www.eo.travel)

[www.EO.travel/mytrip](http://www.EO.travel/mytrip) Tour = EG23 Code = S

v. 002 03/03/22

### Travel Protection Plan - Premium Rates

For a full description of the plan, go to: [www.tripmate.com/wp/427E](http://www.tripmate.com/wp/427E)

Trip Cost	Plan Cost	Trip Cost	Plan Cost	Trip Cost	Plan Cost	Trip Cost	Plan Cost
\$ 0 to \$1000 .....	\$ 99	\$2501 to \$3000 .....	\$299	\$4501 to \$5000 .....	\$499	\$6501 to \$7000 .....	\$699
\$1001 to \$1500 .....	\$149	\$3001 to \$3500 .....	\$349	\$5001 to \$5500 .....	\$549	\$7001 to \$8000 .....	\$799
\$1501 to \$2000 .....	\$199	\$3501 to \$4000 .....	\$399	\$5501 to \$6000 .....	\$599	\$8001 to \$9000 .....	\$899
\$2001 to \$2500 .....	\$249	\$4001 to \$4500 .....	\$449	\$6001 to \$6500 .....	\$649	\$9001 to \$10,000 .....	\$999

Schedule of Coverages	Maximum Benefit
<b>Part A *</b>	
Trip Cancellation .....	Trip Cost
<b>Part B</b>	
Trip Interruption .....	Trip Cost
Missed Connection .....	\$500
Travel Delay (Up to 10 days & up to \$200 Per Day) .....	\$2,000
<b>Medical Expense / Emergency Evacuation</b>	
Accident and Sickness Medical Expense .....	\$25,000
Emergency Evacuation and Repatriation .....	\$50,000
Accidental Death & Dismemberment .....	\$25,000
Baggage and Personal Effects .....	\$1,000
Baggage Delay .....	\$200

Part A - Travel Arrangement Benefits are provided by Educational Opportunities Tours. Part B - Travel Protection Benefits are provided by United States Fire Insurance Co. For New York Residents Only. Part A Benefits are travel arrangement benefits underwritten by United States Insurance Company.

### Conditions and Limitations

This is a brief description of the plan available for all Travel Protection sales for Trips departing January 1, 2013 and after. Certain exclusions and limitations apply and are detailed in the Certificate of Coverage. For example, coverage does not apply to: any Sickness or condition of you, a Traveling Companion or a Family Member traveling with you that existed during the 60 days prior to the effective date of the coverages (The Pre-Existing Condition Exclusion is waived if payment for this plan is received by Educational Opportunities Tours, Inc. at or before the final payment due date for Your Trip or 105 days before departure date, whichever occurs first), suicide, normal pregnancy, war or any act of war. Other Covered Reasons, as defined, includes the following events or their consequences: Cancellation or Interruption of your Trip due to: Inclement Weather, unannounced Strike, mechanical breakdown that causes complete cessation of services of Your Common Carrier for at least 12 consecutive hours; a documented traffic accident while en route to departure; being hijacked or quarantined; jury duty; destruction of your home or destination by fire, flood, burglary or natural disaster; being called to the emergency service of government to provide aid or relief in the event of a natural disaster; a documented theft of passports or visas; a transfer of employment of 250 miles or more; or Revocation of military leave. For further information ask for the Certificate of Coverage which fully details the coverages, provisions, limitations and exclusions of the plan offered and is available to you, upon request, at any time prior to your purchase of the plan. This plan is underwritten by: United States Fire Insurance Company, Eatontown, NJ. Benefits are administered by: Trip Mate, Inc., 9225 Ward Parkway, Suite 200, Kansas City, MO, 64114, 1-800-888-7292 (\*in CA, dba Trip Mate Insurance Agency).

### PROGRAM CONDITIONS

#### INCLUDED IN PRICE:

- Round-trip international airfare • Deluxe motorcoaches • 1st class hotels • Guided sightseeing • Entrance fees to sites visited (as listed in itinerary) • Breakfast & dinner daily • Hotel gratuities • Program fees • Administrative Fee • 3-Night River Cruise
- Fuel surcharges \$450 • Government Taxes \$98 (Increases in government tax and fees are subject to change)

#### NOT INCLUDED IN PRICE:

- Optional Travel Protection Program (see premium schedule) • Extensions and optional sightseeing as listed in the brochure
- Miscellaneous fees such as individual transfers; passports, laundry, lunches, beverages at meals & baggage fees
- Voluntary "Love Offering" for guide and driver • \$100 Document fee for Non-US/Canadian residents • Visa for non-US citizens

#### ACCOMMODATIONS:

Price is per person based on double occupancy. When available, single rooms are often smaller than doubles. While EOT will try to match roommates, EOT cannot guarantee a roommate will be available. Roommates may be assigned as late as 30 days prior to departure and, if one is not available or you request a single room, the following charges apply: \$698 during the basic tour; \$298 for Petra.

#### SAVINGS:

Early registration discounts or other promotions are deducted from the balance of your bill. Hosts/Co-hosts are not eligible.

#### PAYMENT INFORMATION:

A 3.5% Surcharge will be added to all credit card transactions.

#### PAYMENT SCHEDULE:

Payment Amount	Payment Due Dates & Notes
<b>\$100*</b>	Registrations received by more than 10 months prior to departure. *Additional \$500 deposit will be due 6 months prior to departure.
<b>\$300**</b>	Registrations received 6-10 months prior to departure. **Additional \$300 deposit due 6 months prior to departure.
<b>\$600</b>	Registrations received between 6 months to 106 days prior to departure.
<b>\$1,200</b>	2nd Deposit Amount. All guests must have \$1,800 on their account 105 days prior to departure to be ticketed
<b>\$1,800</b>	Registrations received between 105-76 days prior to departure must pay the full deposit amount and may be subject to late registration fees.
<b>Full Payment</b>	Final Payment is due 75 days prior to departure. If paid after the due date, a late payment fee of \$100 will be assessed.
<b>Travel Protection Amount</b>	The Travel Protection Plan premium will be due no later than 105 days prior to departure to be in full effect. Travel protection premiums must be paid in addition to our deposits and in advance of the final payment for coverage to be in effect.

#### REGISTRATIONS RECEIVED less than 105 days prior to departure:

We welcome registrations after 105 days prior to departure. Registrations received between 104-90 days prior will incur a \$100 per person fee. Registrations received between 89-75 days prior will incur a \$200 per person fee. Registrations received between 74-60 days prior will incur a \$400 per person fee. Registrations received 59 days prior to departure or later will incur an additional fee based on air availability. Additional fees will be advised upon registration.

#### CANCELLATION FEES:

100% of Cancellation Fees are covered by the optional Travel Protection Program provided premium has been paid and reason for cancellation is coverable. Those who do not take travel protection should be aware of the following per-person cancellation penalties: From day of registration to 105 days prior to departure, you will be charged the \$100 non-refundable cancellation fee plus any airline fees. Additionally, thereafter, you will be charged any airline penalties and a single room supplement if your cancellation forces your roommate into a single plus the following per-person charges: 104-80 days = \$400; 59-45 days = \$600; 44-31 days = 40% of total cost; 30 days to day of departure = 100% of total cost. Submit cancellation in writing. On or after day of departure, there will be no refund for any services not used.

#### STATEMENTS OF RESPONSIBILITY

EOT does not accept responsibility for losses or additional expenses due to delay or changes in air schedules, hotel overbookings, other hotel related problems or causes, and/or travel supplier cancellations or postponements. Travel suppliers include all tour operators, cruise lines, airlines, hotels, bus companies, entertainment venues, and any other travel supplier used to operate the tour. All such losses or expenses will be the responsibility of the passenger. EOT reserves the right to make adjustments to the itinerary as deemed desirable by EOT, and EOT reserves the right to cancel any tour prior to departure. If a tour is canceled beyond the control of EOT, EOT will provide a refund or a future travel credit to be used two years from the date of issuance for the value of all funds paid by the passenger less nonrefundable travel supplier prepaid deposits, travel supplier change fees, nonrefundable travel protection premiums, and a \$150 administration fee.

#### ABILITY TO TRAVEL STATEMENT:

Passengers registering for the tour accept the responsibility for being in good health and able to walk and travel on the tour. Because many of the sites are not accessible to the physically challenged, those needing oxygen, wheelchairs, or other ambulatory assistance will find the tour extremely limiting to their experiences. If you have questions, please contact Educational Opportunities Tours Inc. for more details. EOT reserves the right to refuse or revoke travel to anyone who is, in the sole judgment of EOT, incapable of group travel without causing undue demands upon the staff or other tour participants. Accessible rooms/cabins are limited and subject to confirmation after receiving the passenger's written request.

#### PASSPORT INFORMATION:

Passport information must be submitted to our office no later than 105 days prior to your trip. Failure to provide your passport information to our office by this date may result in change fees or denial of travel. Discrepancies in information may result in change fees, delays in receiving travel documents for your trip, or denial of travel. Any fees incurred due to discrepancies are the responsibility of the passenger.

#### PRICE INCREASES:

All prices quoted in this brochure are subject to change prior to payment in full due to currency fluctuations, fuel surcharge increases, government taxes and fees increases or unforeseen circumstances. In addition, you may be subject to a price increase after payment in full has been received due to potential government imposed taxes and fees.

#### AIRLINE ROUTES AND TICKETS:

In order to keep prices low, EOT does not guarantee the most direct routing to your final destination. Once issued, airline tickets cannot be changed or refunded thereafter. Air transportation to/from your destination will be economy class on IATA and ARC carriers utilizing APEX or SUPER APEX non-refundable, non-amendable tickets for groups of 10 or more flying together on entire itinerary. If you choose to depart from a different city than your group or traveling companion, or deviate your flight and/or trip plans, and/or you are taking a pre or post tour, you may fly on a different scheduled flight(s) than the rest of your group. If you make your own air arrangements, you are responsible for booking all needed flights for your travel unless specified otherwise. Contact guest services for further details.

#### FLIGHT TIMES AND SEATING:

All flights are subject to change by the airlines without advance notice. EOT is not responsible for such changes or delays and does not reimburse expenses resulting from such delays. If you are making your own flight arrangements to the departure city, we recommend you purchase a ticket that can be exchanged without large penalties. There is no advance seat selection for groups on most airlines. Early check-in is necessary to secure seats with travel companions and those with special needs. Due to security measures taken at airports, it is advisable to arrive at the airport three hours prior to departure time. Seating is solely under the control of the airlines.

#### ADDITIONAL AIRLINE FEES:

You will likely incur additional airline checked baggage fees that are not included in the price of the tour. These fees vary by airline and are at the airline's discretion on each segment of the flight itinerary. Additionally, you may incur optional fees (food, excess baggage, overweight baggage, items of personal nature, etc.) as well. For more information, visit [www.eo.travel/travelinfo/airlinefees.aspx](http://www.eo.travel/travelinfo/airlinefees.aspx).

#### ON OWN DEVIATIONS:

On Own Deviations from the standard tour program must be submitted in writing and are subject to additional airline fees, if applicable. Transfers for passengers who deviate are not included.

#### ITINERARY CHANGES:

Every effort has been made to ensure the accuracy of this brochure. While EOT will make every effort to ensure you will see all sites listed in this brochure, the availability of sites, order of sites and/or days and number of days may be altered to accommodate changes in airline, hotel schedules, and local conditions. No changes to the itinerary are effective unless approved in writing and signed by an authorized officer of the tour operator. Except as stated herein, no other person is authorized to cancel, modify or vary the tour arrangements or to make any representation of warranty concerning the tour.

Due to airline schedules, some participants may receive one or two extra leisure days at a nominal per day charge and some extensions may not be available on all departure dates. If itinerary changes necessitate extra overnights, you will be charged \$125 per night; single rooms \$175 per night. Meals for extra nights are not included.

#### VALIDITY DATE:

This brochure is valid until 05/03/22. If validity date has passed, current brochures may be found at [www.eo.travel](http://www.eo.travel). Registrations will still be accepted after the validity date.

#### RELEASE INFORMATION:

Payment of deposit indicates permission for EOT or its agents to record the registrant's participation and appearance on video tape, audio tape, film, photograph, or any other medium and to use the registrant's name, likeness, voice, comments, submitted documentation, written papers, and/or biographical material without restrictions or limitation for any advertising, marketing, publicity, educational or promotional purpose which EOT or its agents deem appropriate, unless the registrant or guardian otherwise notifies EOT in writing prior to departure.

Enrollment in, payment of deposit and/or acceptance of final documents, vouchers, or tickets shall be deemed to be consent to the Passenger Agreement and Program Conditions of the brochure. Prices are based on tariffs in effect as of January 1 of the previous year and are subject to adjustment without notice in the event of any change or currency fluctuation.

Except where otherwise stated, EOT acts only as agent for the relevant supplier in securing hotels, transportation and other travel services and in no event shall EOT be liable for failure by any such supplier to render any transportation, lodging or other travel service to be provided on the tour. The passenger agrees that EOT assumes no liability for injury, death, damage, loss, theft, accident, delay, any lost or damaged luggage, or irregularity which may occur by reason of any negligent or willful act or omission of any suppliers of service.

EOT does not own or operate any of the suppliers of services to your tour. Similarly without limiting the foregoing, passenger agrees to hold EOT harmless for any defect in any vehicle, plane, boat, bus, car, van or other vehicle, act of war or insurrection, terrorist activity, revolt or other civil uprising, military action, strikes or labor unrest or any Act of God or for any other act of any third party. Florida law will be applicable to any dispute which arises out of or concerns this brochure or your tour. Any and all litigation must be brought only in and for courts in Polk County, Florida to the exclusion of litigation anywhere else in the world.

Educational Opportunities Tours is the tour operator and is solely responsible for the travel program. Educational Opportunities Tours is registered with the State of Florida as a Seller of Travel. Registration No. ST24130. CST2027682-40.